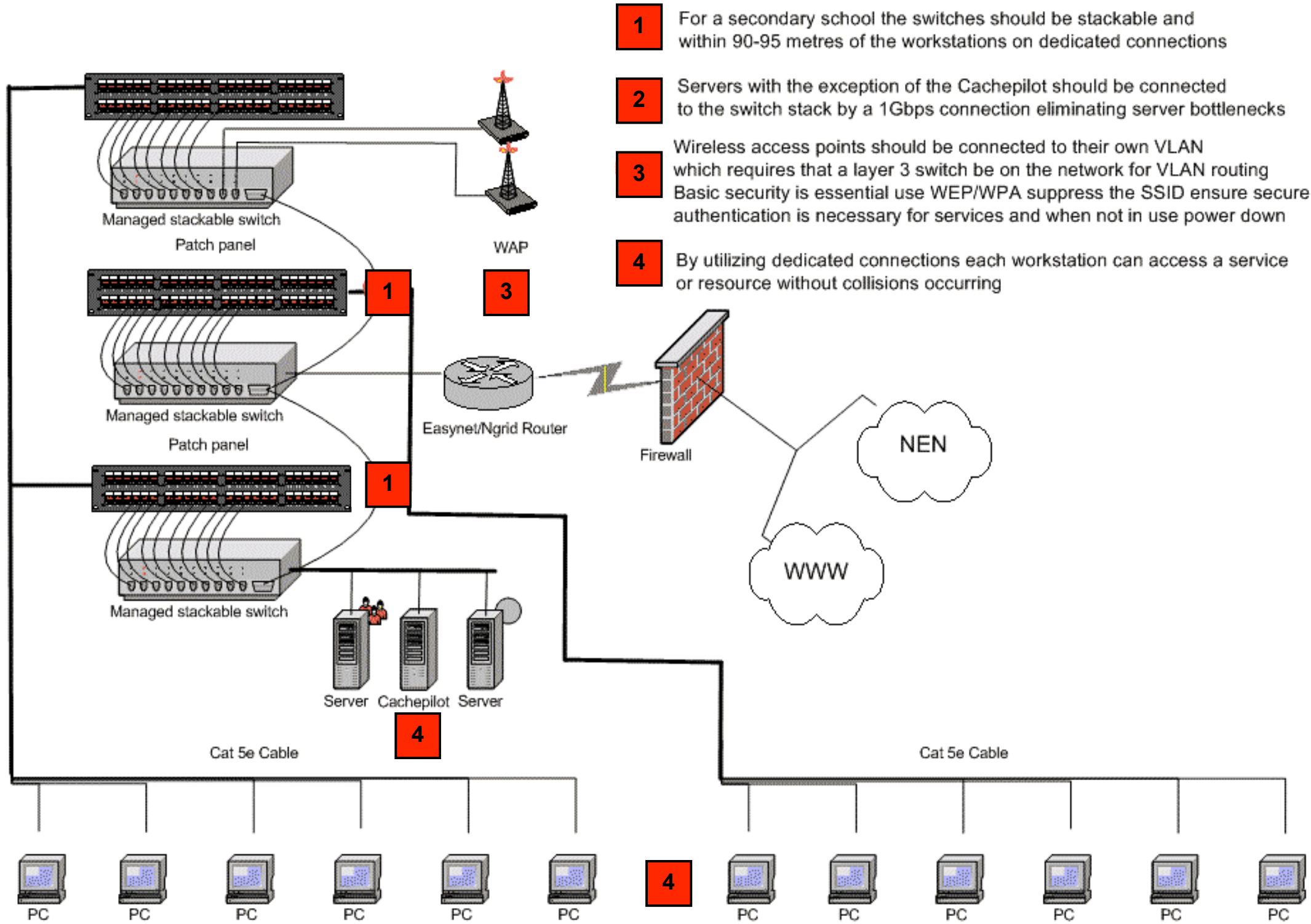


Example of Secondary School or Large Network Installation



- 1** For a secondary school the switches should be stackable and within 90-95 metres of the workstations on dedicated connections
- 2** Servers with the exception of the Cachepilot should be connected to the switch stack by a 1Gbps connection eliminating server bottlenecks
- 3** Wireless access points should be connected to their own VLAN which requires that a layer 3 switch be on the network for VLAN routing
Basic security is essential use WEP/WPA suppress the SSID ensure secure authentication is necessary for services and when not in use power down
- 4** By utilizing dedicated connections each workstation can access a service or resource without collisions occurring