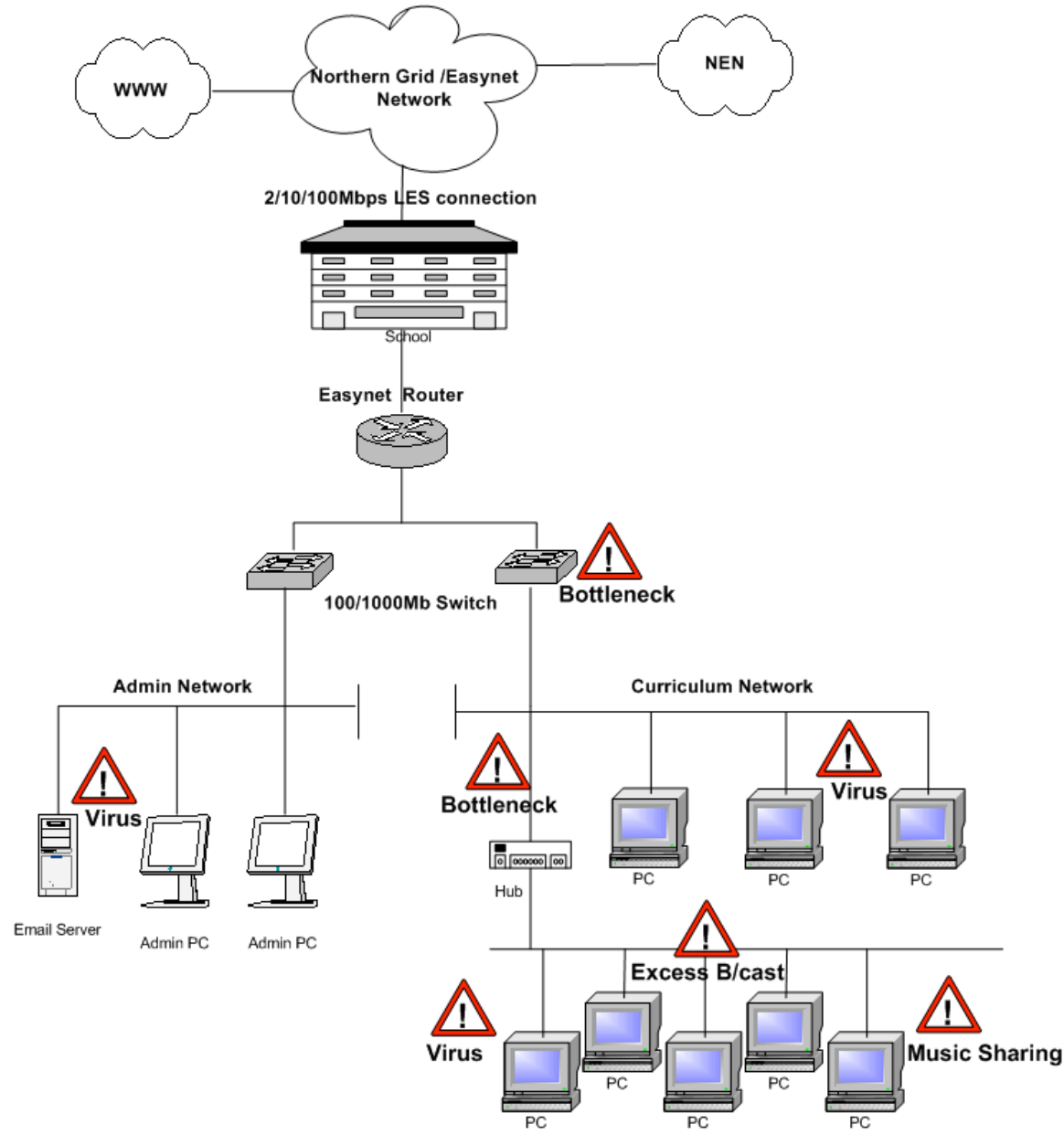


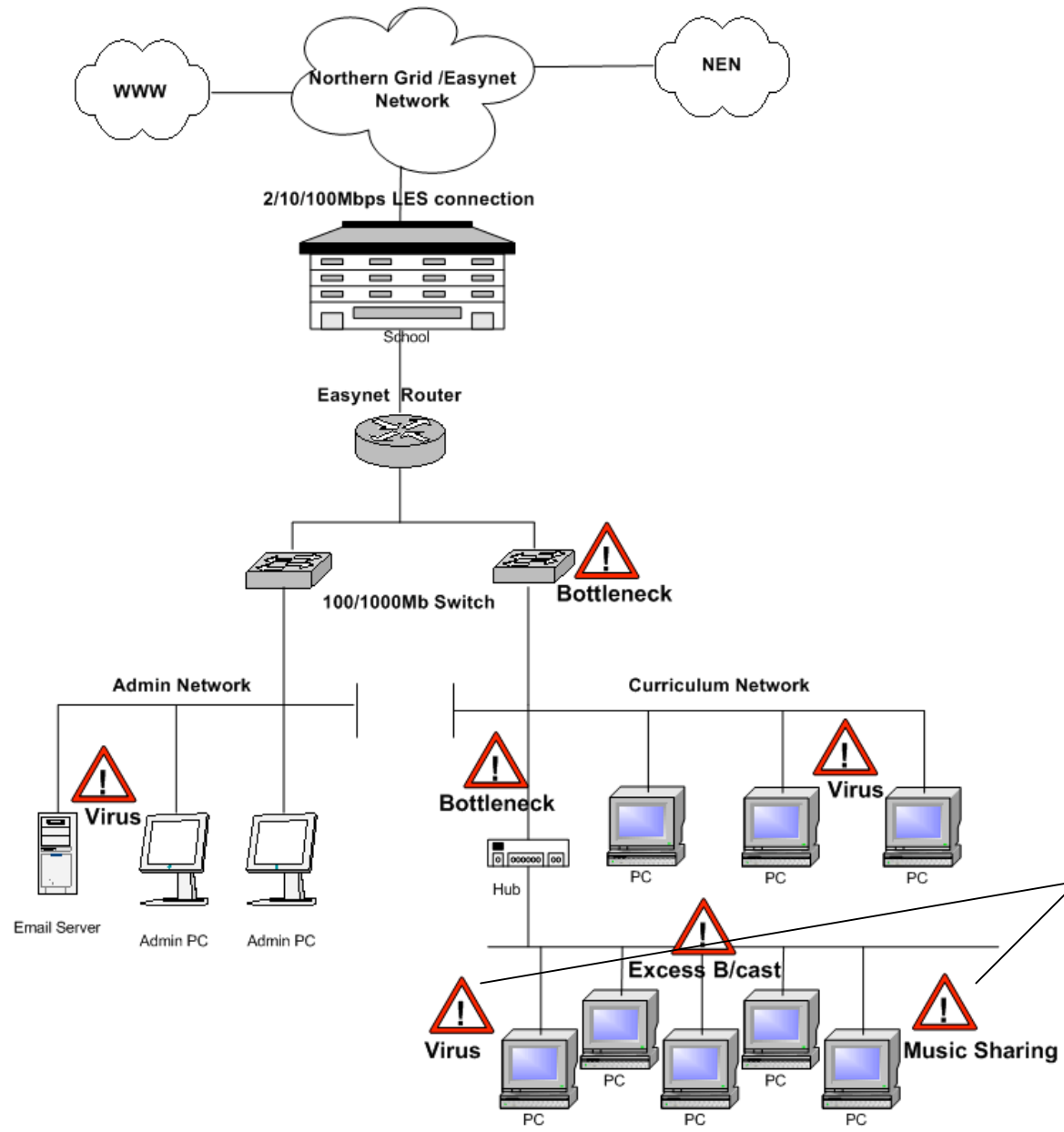


# **Performance & Security Problems with School Networks**

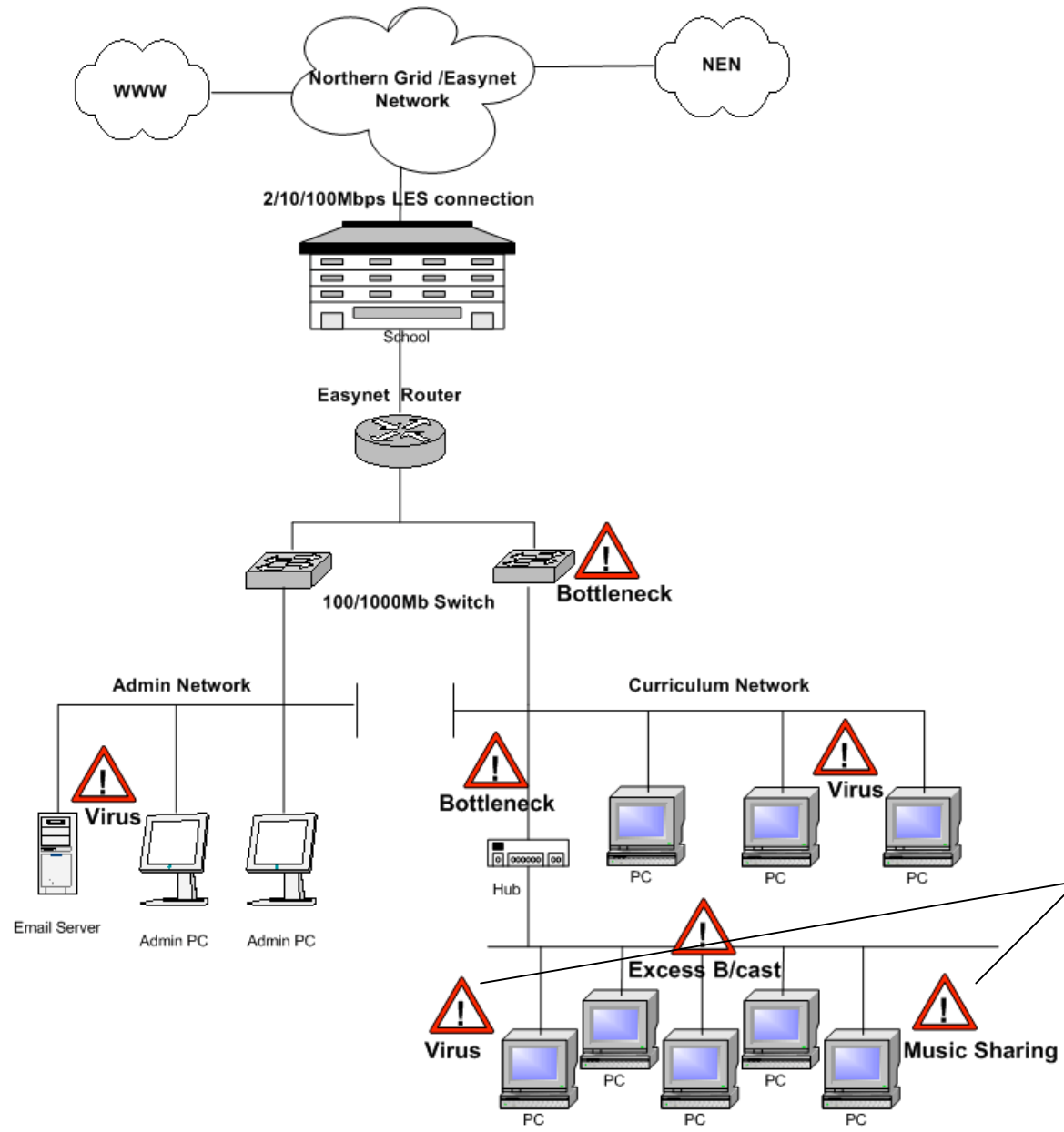
**Mark Vinnicombe**

**Broadband Technical Officer**



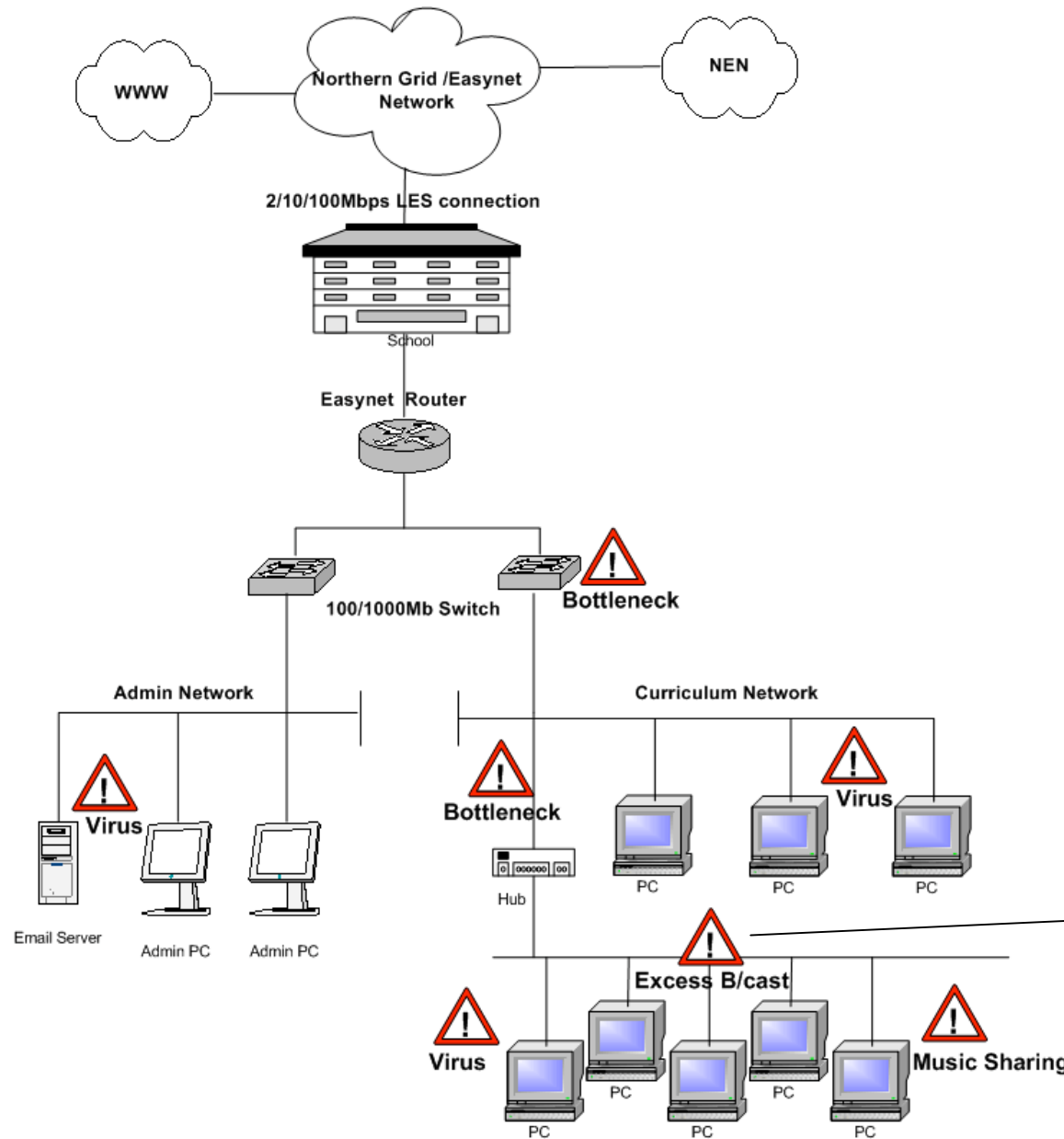


- Viruses, Trojans**
- Spyware**
- P2P Apps Kazaa, Morpheus**
- Password Loggers**
- OS/Data Corruption**
- MS File Sharing**



**Solution**  
**Centralised lockdown**  
**of the desktop**

- Viruses, Trojans
- Spyware
- P2P Apps Kazaa, Morpheus
- Password Loggers
- OS/Data Corruption
- MS File Sharing



**Switch Misconfiguration**

**Printers, Servers**

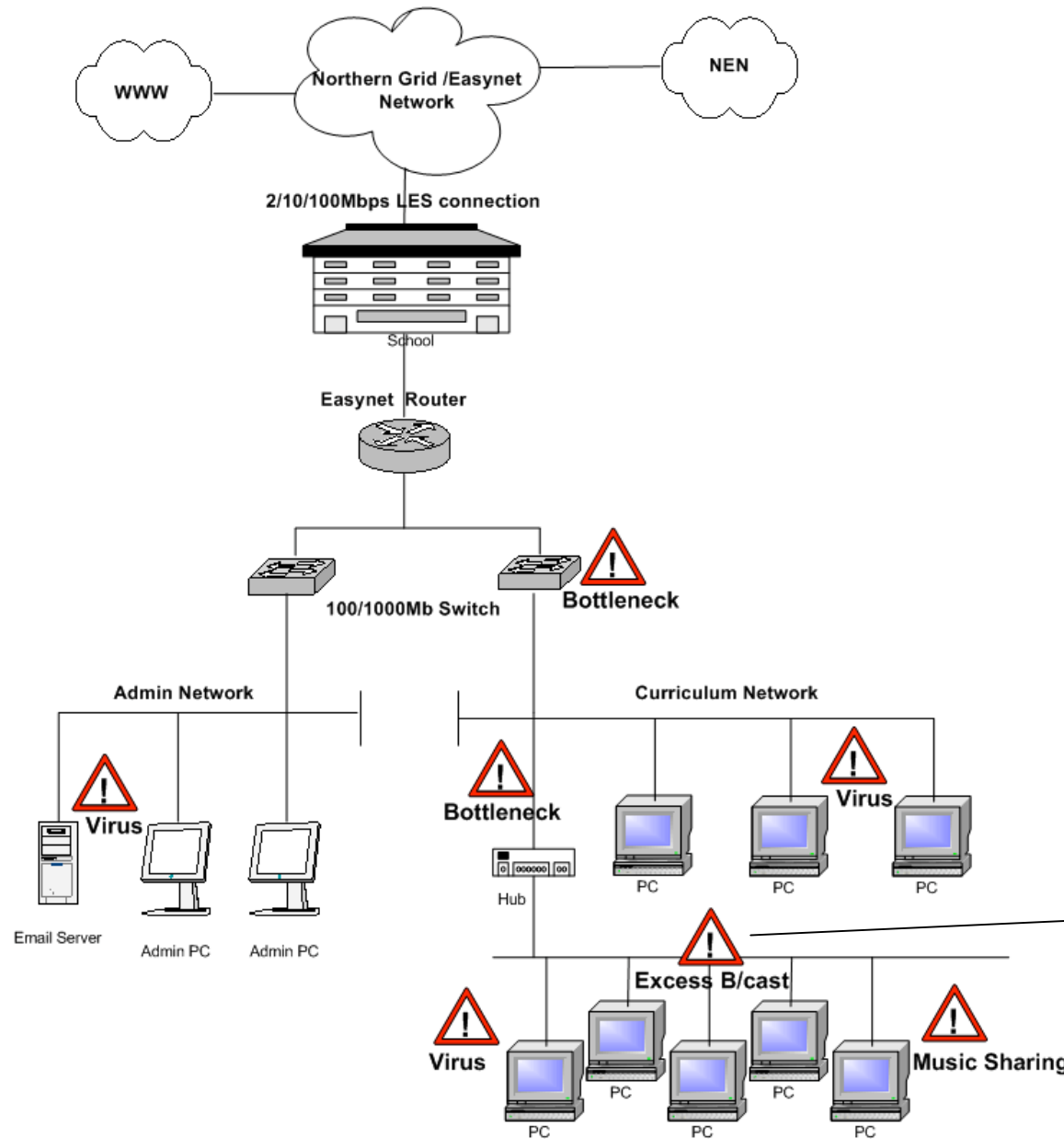
**Win 98 PCs**

**Worms**

**WAPs**

**Multimedia Applications**

**Faulty Hardware - NICs**



## Solution

**Replace Win 98 PCs  
and plan a WAP  
deployment**

**Switch Misconfiguration**

**Printers, Servers**

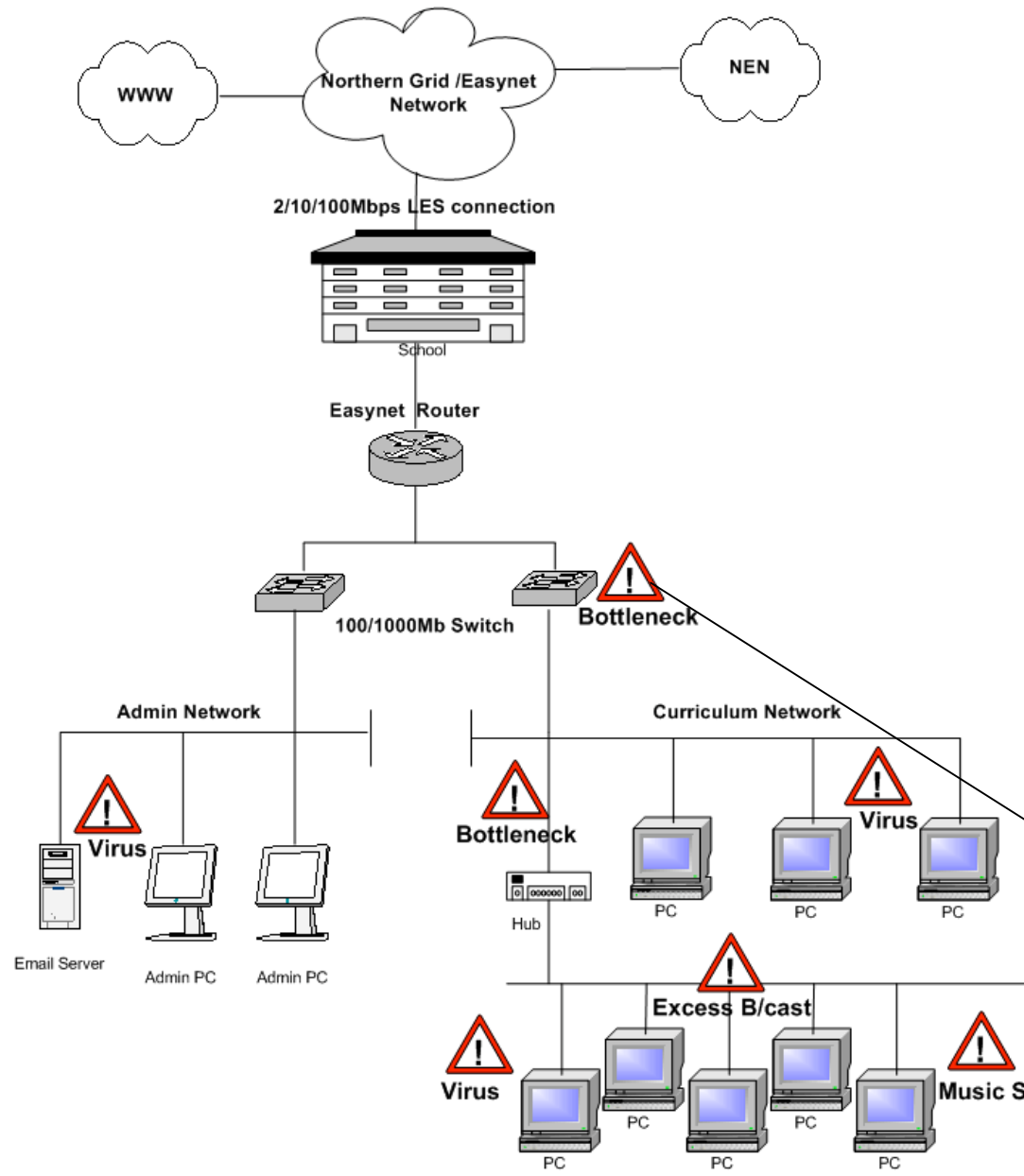
**Win 98 PCs**

**Worms**

**WAPs**

**Multimedia Applications**

**Faulty Hardware - NICs**



**Switches not Managed**

**IP Schema**

**Excessive Filtering Lists**

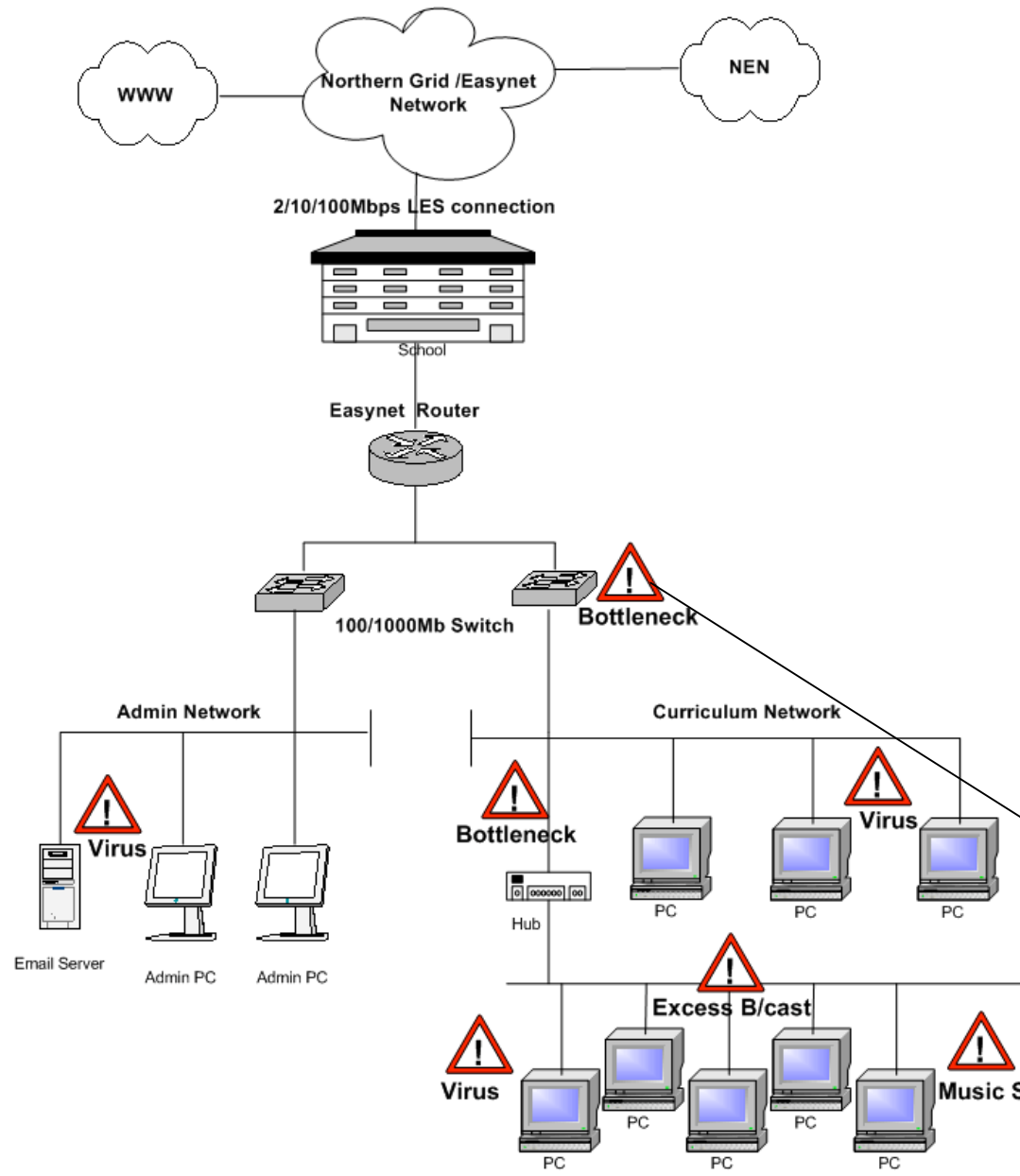
**Server Specification & Configuration**

**Server-Switch at 100Mb**

**Multiple Hosts to each Switch Port**

**Roaming Profiles**

**Media Rich Applications**



## Solution

**Managed switches  
and good network  
management**

Switches not Managed

IP Schema

Excessive Filtering Lists

Server Specification &  
Configuration

Server-Switch at 100Mb

Multiple Hosts to each Switch Port

Roaming Profiles

Media Rich Applications



# Northern Grid

## Network Assessment

Identify performance and security issues and recommend appropriate solutions